

図25 スス汚れ(6166-48修理前)

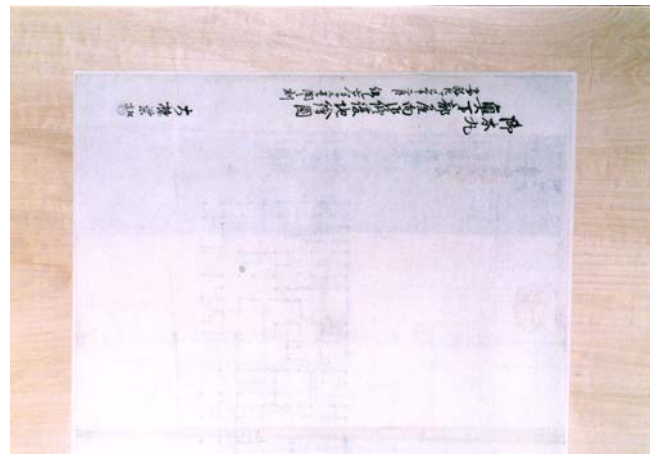


図26 スス汚れの除去(6166-48修理後)

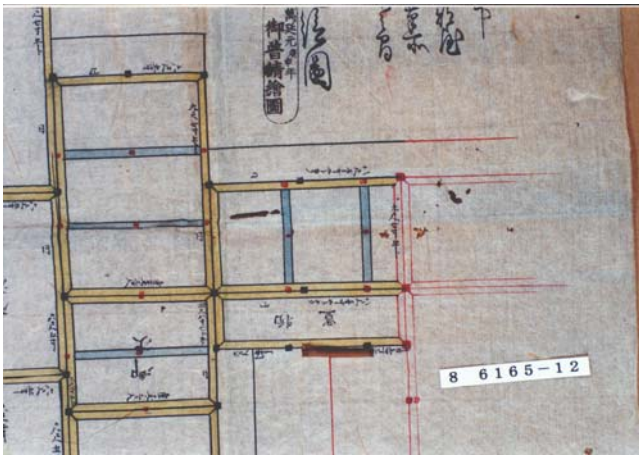


図27 虫損補紙(中央上)と切り抜き部補紙(中央下)(6165-12修理前)

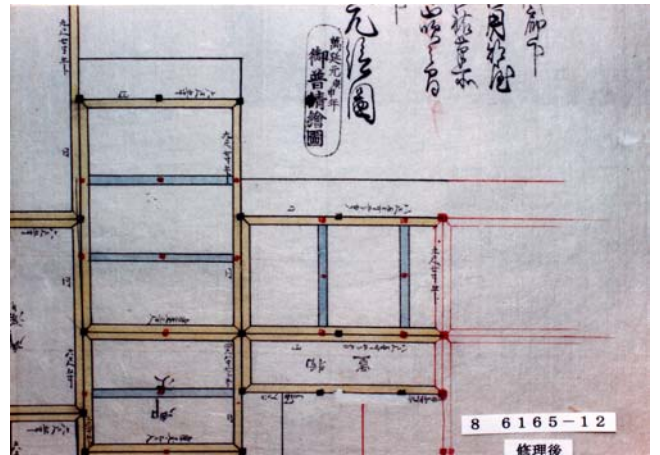


図28 虫損補紙と切り抜き部補紙の白い紙(6165-12修理後)

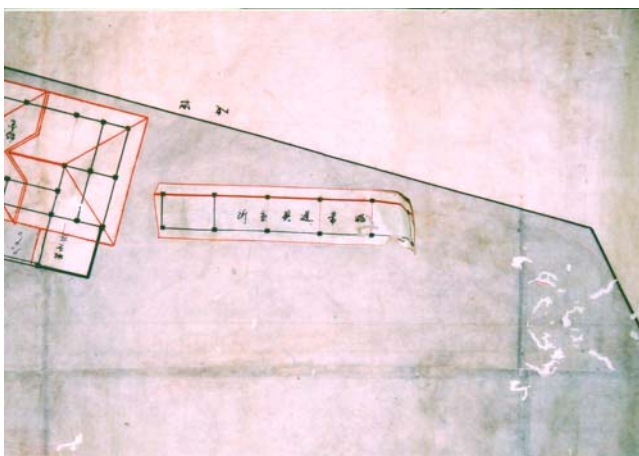


図29 貼紙の貼り付け位置(6171-75修理前)

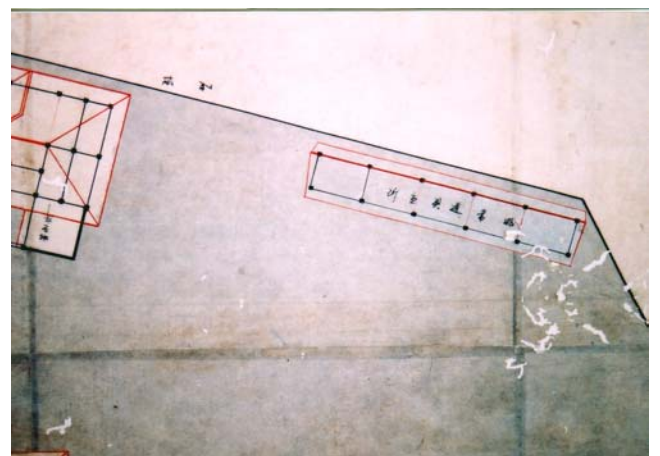


図30 貼紙の貼り直し(6171-75修理後)

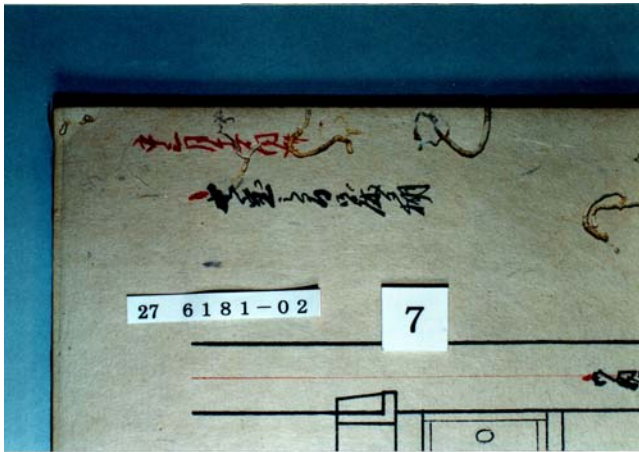


図31 虫損 折本(6181-02修理前)

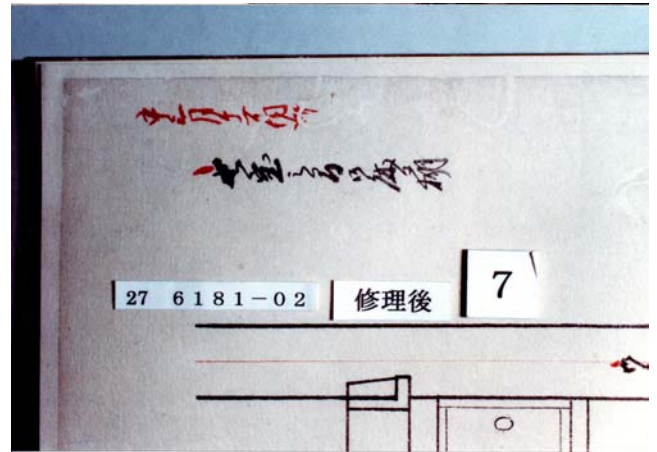


図32 虫損 折本(6181-02修理後)

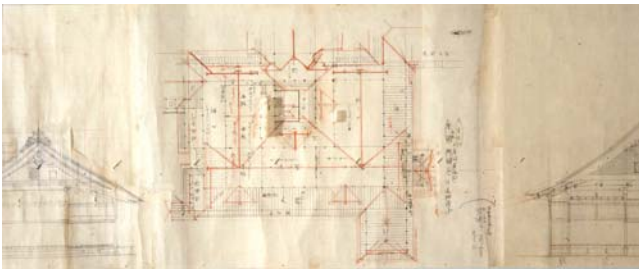


図33 本紙の継ぎ手 卷子(6167-D3修理前)

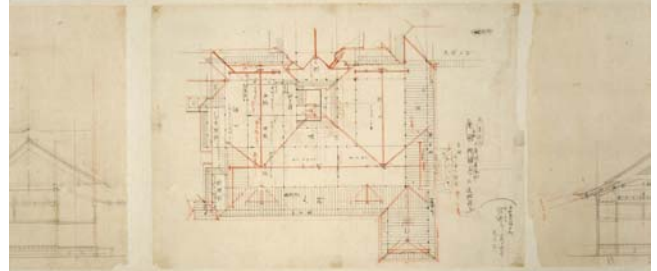


図34 隔て紙、天地の足し紙(6167-D3修理後)

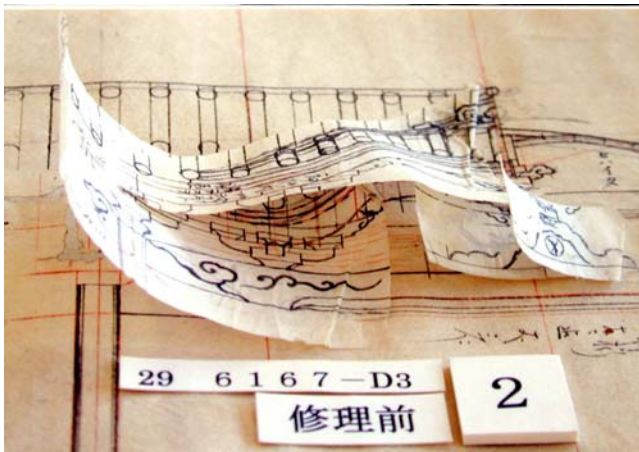


図35 貼り紙(6167-D3修理前)

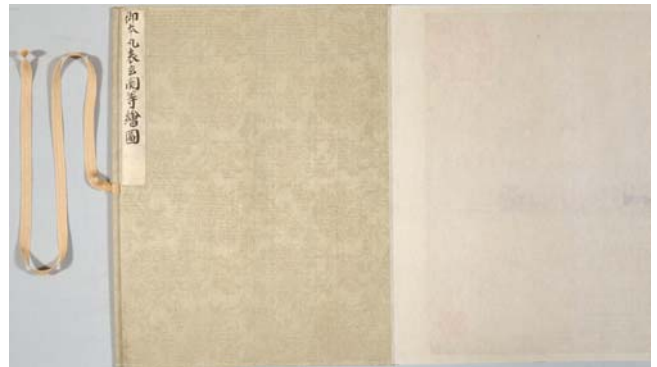


図36 表装 表紙、発装、紐(6167-D3修理後)



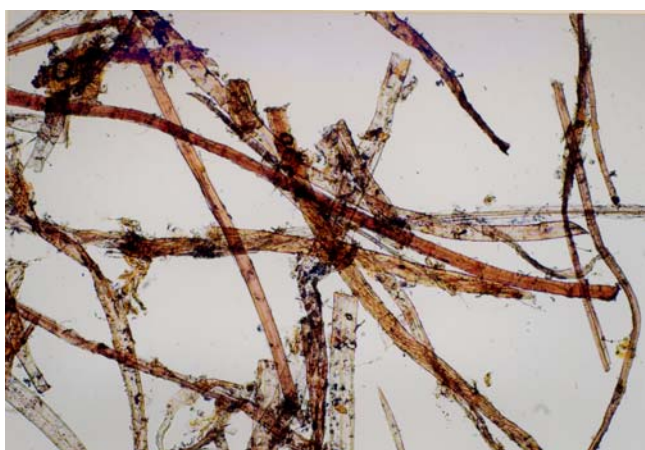


図37 裏打紙 顕微鏡写真(楮50%、木材50%)(6171-04)

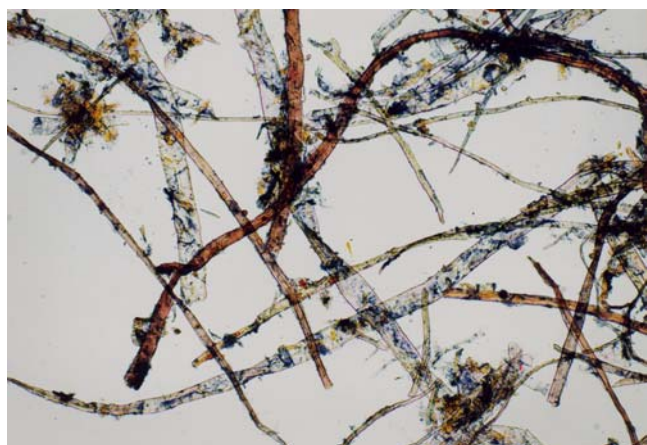


図38 裏打紙 顕微鏡写真(楮、木材、三桠、わら)(6171-75)

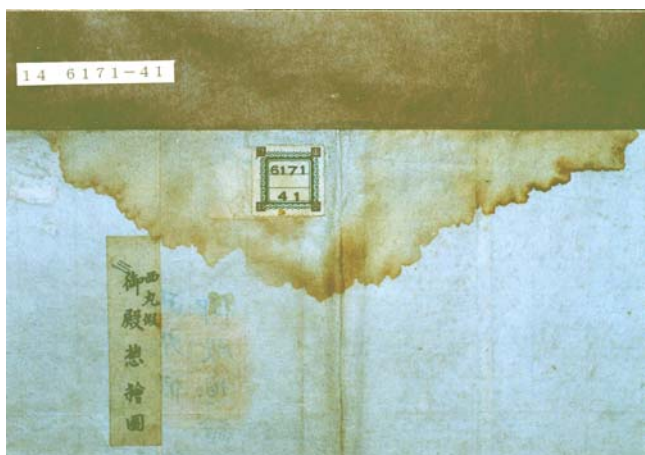


図39 裏打紙を取り外し、別保存、題箋は元の位置に貼り戻す(6171-41修理前)

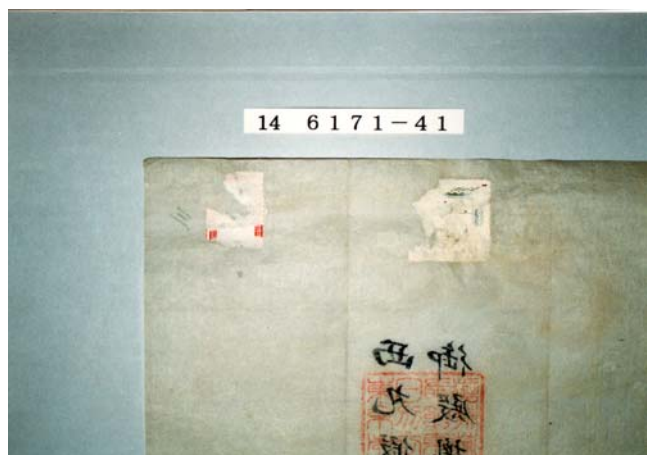


図40 裏打紙取り外し後の本紙裏面とラベル紙片(6171-41修理中)

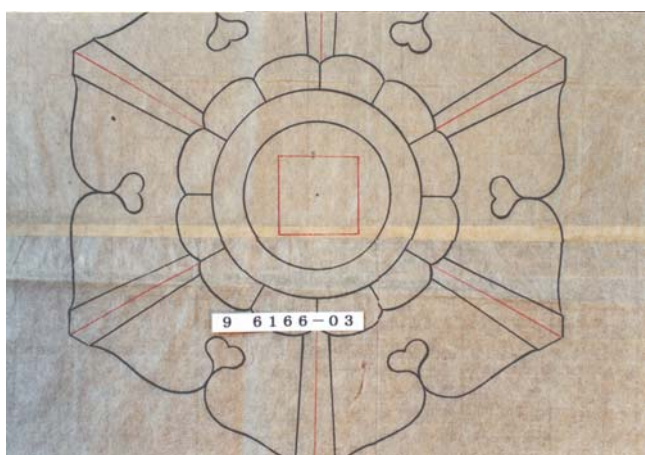


図41 製図の技法痕跡 コンパスによる円中心の穴(6166-03)

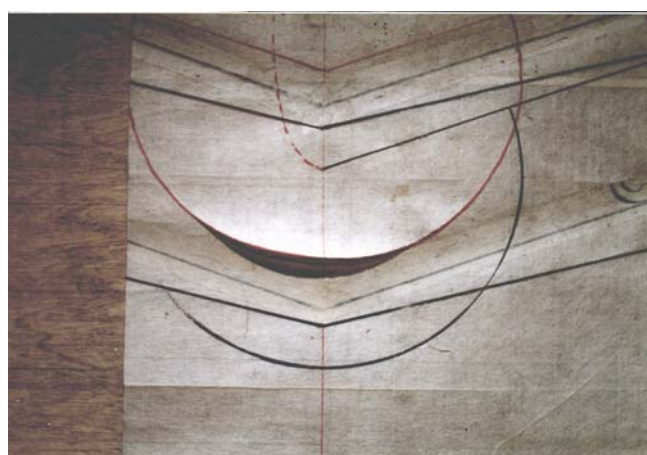


図42 製図の技法痕跡 コンパスによる本紙の切れ(6162-02)

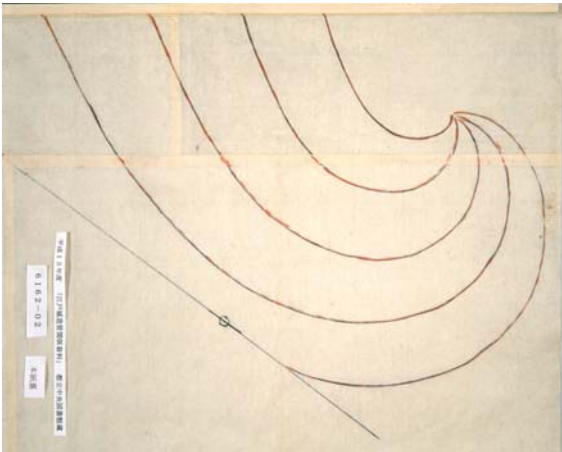


図43 製図の技法痕跡 本紙裏面の朱線(6162-02修理中)



図44 畳み図共通の保存箱



図45 畳紙

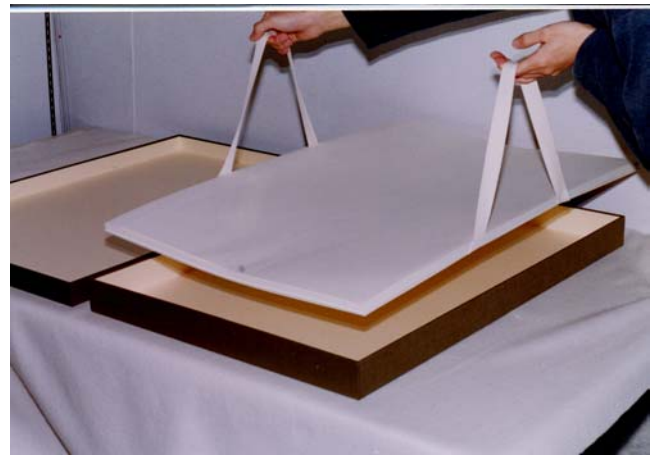


図46 畳紙の出し入れ

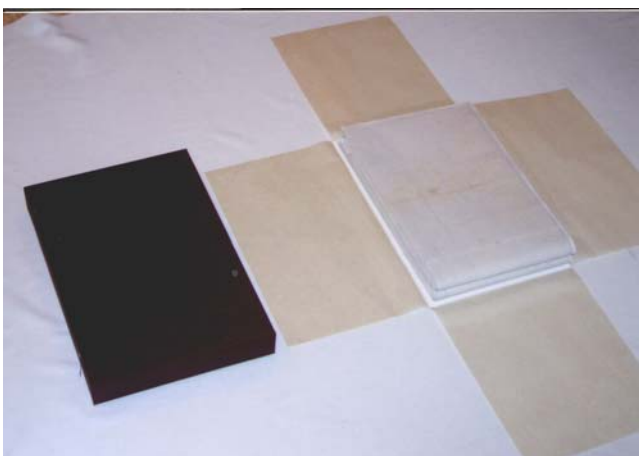


図47 大型図の専用保存箱



図48 巻子の専用保存箱(6167-D3)